



Reconfigured First Floor with Universally Designed Units

Welcoming and Flexible Common Space with Ample Natural Light

Well Lit Entry Canopy for Stronger Connection to Street and Neighborhood and Protection from Elements

Handrails for Safety and Stability

Indoor and Outdoor Seating

On Site Space for Social and Medical Services

60 AMSTERDAM AVE

A Prototype for the Ground Floor Reconfiguration of Existing Public Housing to Support Intergenerational Community

a joint initiative of

AIA NY Chapter Design for Aging Committee

and

Amsterdam Houses Residents' Association

in collaboration with

NYCHA

New York Academy of Medicine

seed funding provided by

Office of Councilmember Helen Rosenthal

Robert Wood Johnson Foundation President's Grant Fund

of the Princeton Area Community Foundation

For more information:

Christine Hunter at chunter@maparchitects.com

or

Gail Ressler at gailressler@gmail.com



Site Selection:

60 Amsterdam Avenue was selected based on its key location within the Amsterdam Houses Complex and the overall needs of the Senior Community.



Existing Conditions:

The Design for Aging Committee examined the site and interviewed residents about the issues Seniors face at Amsterdam Houses. Complaints included issues related to safety, mobility, comfort and social isolation.



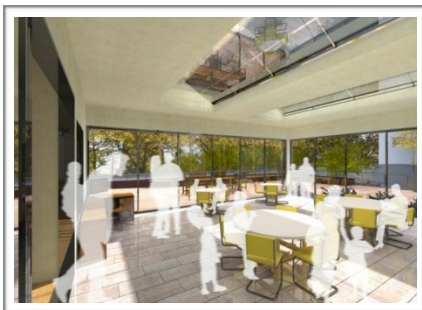
Solutions:

Relocate frail seniors or senior households to the first floor where units could be configured to meet current standards and Universal Design Principals.



Solutions:

Create addition to serve as Flexible Community Space. with adjacent outdoor Common Area. Include space for service providers. Coordinate programming with NORC Services.



Challenge:

Raise \$3.5m. funds and coordinate partners quickly enough to begin to deliver solutions for today's seniors and the growing senior population anticipated over the next 20 years.